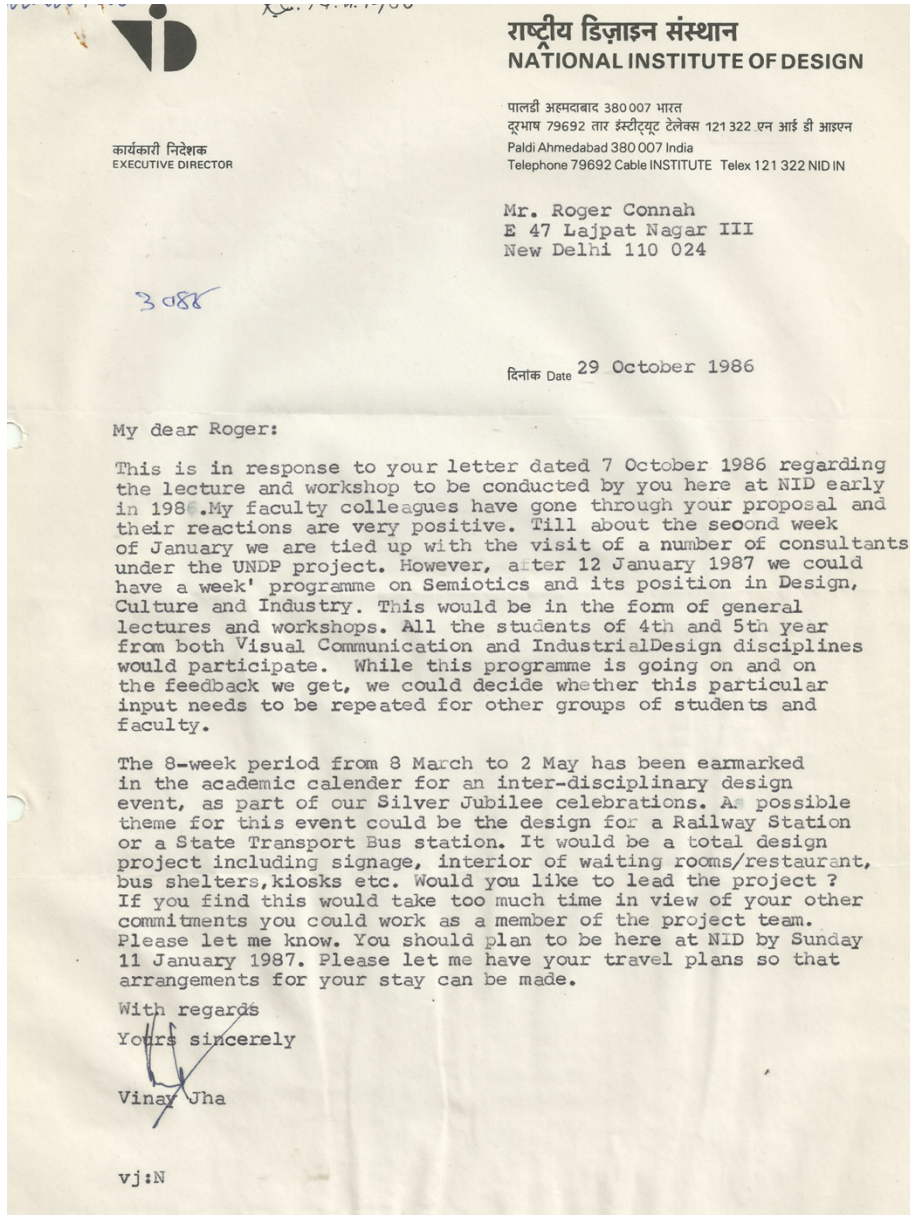
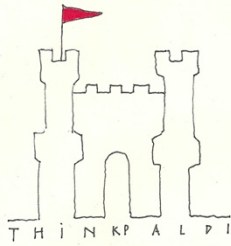


**NOTHING TO TEACH 3**

**NEXUS** Miscellaneous Documents

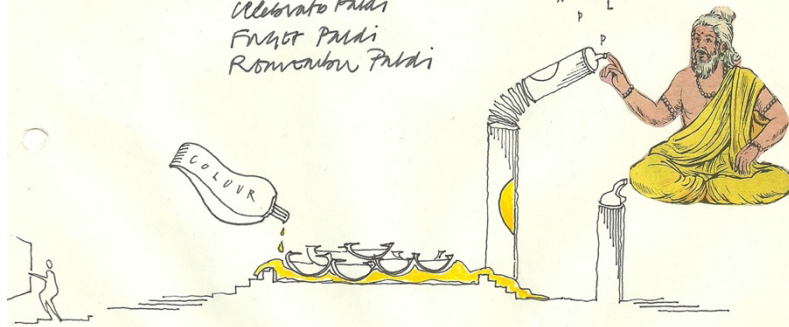
Roger Connah (1987)





Think Paldi  
Eat Paldi  
Sleep Paldi  
Dream Paldi  
Run Paldi  
Stop Paldi  
Meditate Paldi  
Celebrate Paldi  
Fight Paldi  
Remember Paldi

K L A P  
L B A N P  
P I L P A L P P  
I L A L H B I  
I P L A D  
A P D I  
P A L  
P




ROGER CONNAH  
E 47 LAJPAT NAGAR III NEW DELHI 110024 INDIA TEL 611601  
N.S. 1987.

A A P N U



In the coming days we are celebrating Paldi Crossroads. Events designed for this purpose will appear at various times of the day and week. These events involve surprise structures, installations, performances and craft alterations.

The Nexus group from  invites participation from anyone interested in Paldi as a living space. Everything is designed to explore the communication value of new or existing textures. Hanuman will be celebrated on 14th April the Hanuman Jayanti Day, in paint, in light, in space, in sound. These events will culminate with a living exhibition on

28 29 April  
at  
Paldi

Any suggestions are welcome at our silk worm site office near Udipi Cafe.

P A L D I  
N A T I O N A L I N S T I T U T E O F D E S I G N



આવના ગણતરીના દિવસોમાં અમે પાલટી ચાર રસ્તા ઉપર ખાસ પ્રસંગ ઉજવવાના છીએ. આ ઉદ્દેશ માટે ડીઝાઇન કરેલા પ્રસંગો જુદા જુદા દિવસના સમયે અકવાલિયા સુધી ફર્યાવાશે. આ પ્રસંગોમાં આશ્ચર્ય પમાડે તેવા સ્ટ્રક્ચરસ, તેના નિર્માણ, તેની ઉપયોગિતા અને કવાની કારીગરીનો સમાવેશ થાય છે. ના "નેક્સ્ટ" ગ્રુપ નરફથી જે કોઈ વ્યક્તિને પાલટીને જીવન સ્થળ બનાવવામાં રસ હોય તેને આમંત્રિત કરવામાં આવે છે. આ બધી જ ડીઝાઇન નવી તેમજ વાલુ પદ્ધતિથી માલિની મેળવવાનું સંશોધન છે. ૧૪મી એપ્રિલ, હનુમાન જયંતિને દિવસે હનુમાનને રંજથી, ચોચનીથી, અવકાશમાં અનન ધનિથી ઉજવવામાં આવશે. આ પ્રસંગોની સર્વાચ્ચ કક્ષા ૨૮ અને ૨૯

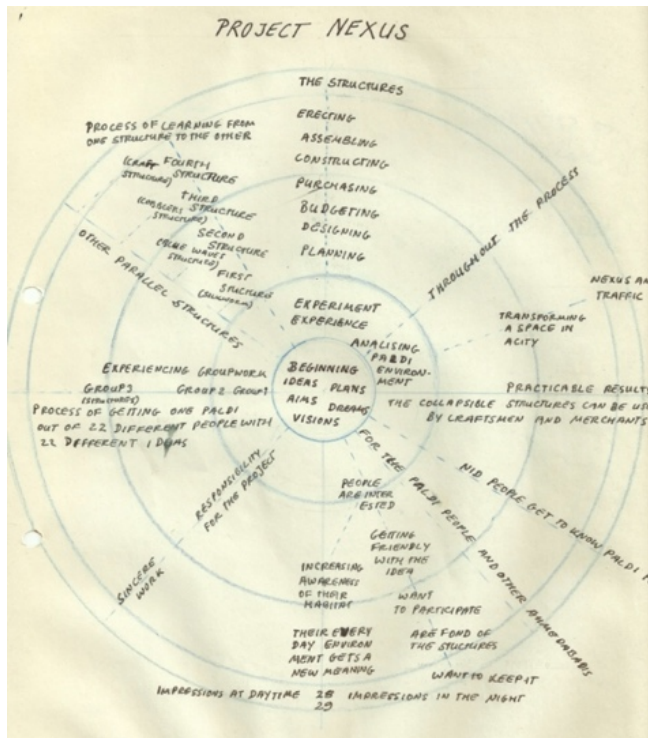
એપ્રિલ

પાલટી ચાર રસ્તા

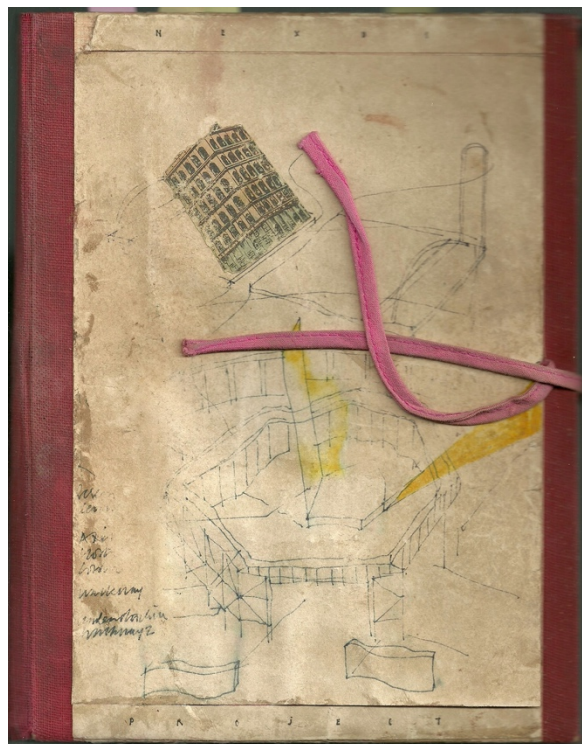
ઉપર જીવન પ્રદર્શનથી થશે.

કોઈ પણ પ્રકારના સૂચનો 'ઉડીપી કાફે' નજીક અમારી સાઈટ- ઓફિસ ઉપર સ્વીકારવામાં આવશે.

આપણું  
WAL



Design Mapping - Daniel Bernoulli



Roger Connah The Notebook 1987



**DIFFERENT SHADES OF HANUMAN:** As part of an environment workshop, a team of students of the National Institute of Design has given a modern interpretation of Lord Hanuman in this drawing at Paldi Char Rasta in Ahmedabad.

## NID workshop on use of living space

By A Staff Reporter

**AHMEDABAD, April 14.** FOR the first time the National Institute of Design has organised a unique design and environment workshop at Paldi bus terminus to explore the communication value of new or existing textures and also to create an awareness in the common man about the living space and environment in the area.

Addressing a press conference here today, Mr. Roger Connah, a Finland-based architect and director of the workshop, said that the workshop would focus on the use of design and semantics as analytical tools to enhance the literacy of the street among the common man by studying the environment.

Mr. Connah said that a study of the Paldi bus terminus was undertaken by a team of NID students known as Nexus group. Ideas were suggested by this group for re-creating and re-organising environment and service to the public in that area. The entire workshop is based on the theme — 'Aapnu Paldi'.

The most creative part of the workshop is the meaningful painting drawn by the NID students on the walls of an ancient Panchmukhi Hanuman temple in the Paldi area to explain the mythological greatness of Lord Hanuman to the common man through paintings. This had been also done to coincide with Hanuman Navami today.

**MYTHOLOGICAL BACKGROUND:** A huge painting drawn

inside the temple shows the Pandavas and an 'Aghori Saint'. Mythological writing on the wall along with the painting tells us that this "Aghori Saint" who used to become a beast at night had shown the underground way to the Pandavas thousands of years ago.

Yet another painting outside the temple shows the present and the mythological significance of Lord Hanuman in our culture and civilisation as a perfect example of self-control and celibacy.

Also the NID students have shown the simple way to construct cheap shelters for the vendors, larvalas, watermen by setting up two cloth and a bamboo structures in the Paldi area.

### IN THE CITY TODAY

**Punjab National Bank:** Swami Vishwadevanandji to inaugurate the 108th branch of the bank, Khokhra, Maninagar east, 9 a.m.

**Anandam:** A meeting to pay tribute to late Mrs. Udayaprabha Mehta, M. J. Library Hall, Ellisbridge, 6.30 p.m.

**Harold Laski Institute of Political Science:** Prof. P. G. Mavlankar to speak on "V. P. Singh forced out the deepening crisis", Socrates Hall, Maharashtra society, 6.45 p.m.

**Rotary Club of Ahmedabad (West):** Closed fellowship meeting, Amber garden restaurant, Iodhpur char rasta, 7.15 p.m.

### PACE COMPUTER CONSULTANTS

WE OFFER:

Comprehensive Maintenance Services for  
IBM PC, PC/XT, PC/AT and  
Compatible Computer Systems.

Write to:

PACE COMPUTER CONSULTANTS

206, Sanjay Apartments, Ambavadi,  
AHMEDABAD 6. OR

Roger Connah © 2022